

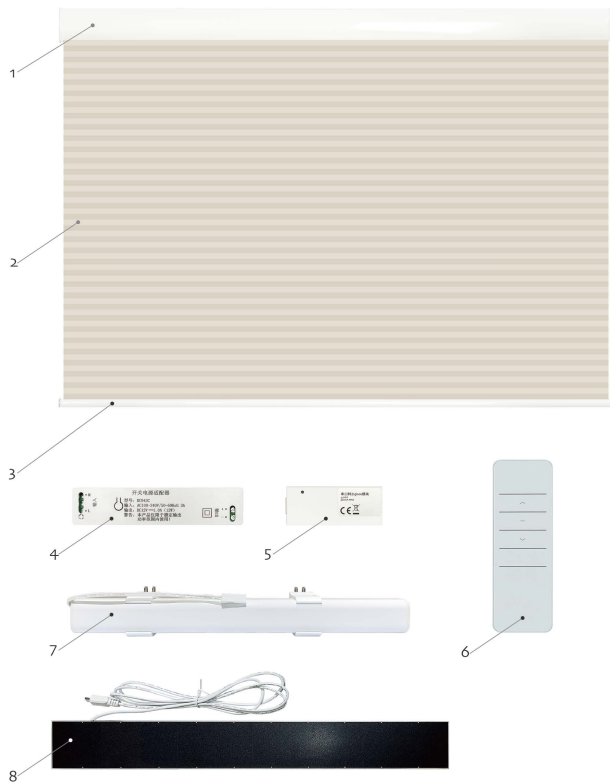


Installation & Usage Instruction

Motorized Honeycomb Blinds

DESIGN BY HUNTERS

Product Structure



1. Cover

2. Fabric

3. Bottom rail

4. Transformer

5. Tuya/Zigbee Controller

6. Remotes

7. Battery

8. Solar Panel

Packing list



Honeycomb Blinds x1



Instruction x1



Bracket x2



Expansion screws x4



Battery x1



Remotes x1

Recommended installation tools



Mark Pen



Tap measure



Screw driver



Level instrument



Electric hand drill

Installation Methods



Ceiling Mount

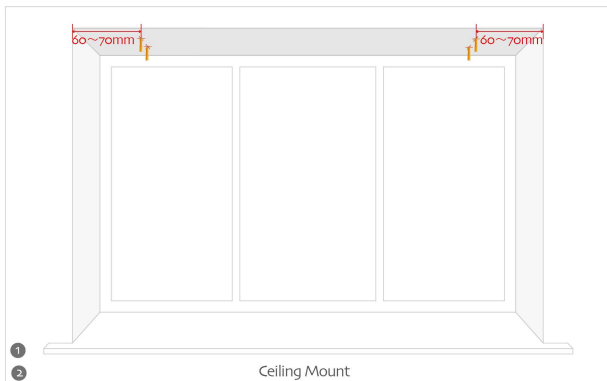


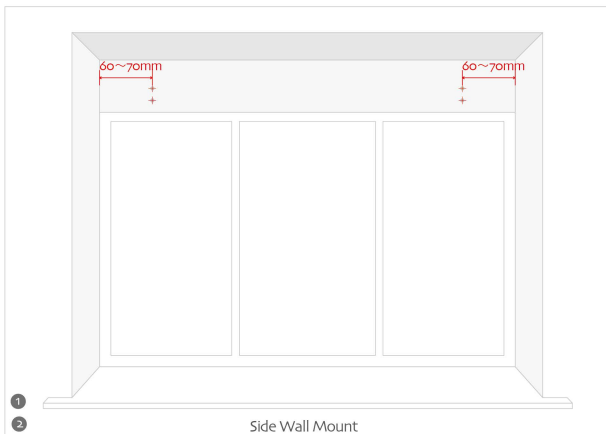
Side Wall Mount

Installing Steps

Step 1: Make sure the wall material such as wooden, concrete or brick etc. Measure the distance of mounting brackets and mark the point of mounting. Advise the point around 60~70mm from side wall.

Step 2: If the wall is wooden then could use the drill fix the screws. If the wall is in concrete or brick-concrete, then need use cable drilling tool make hole firstly then put into the expansion with rubber hammer.

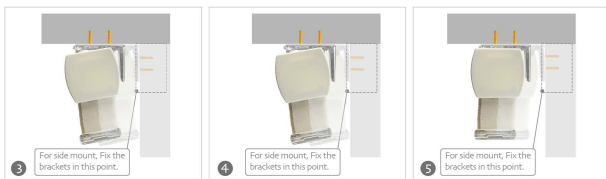




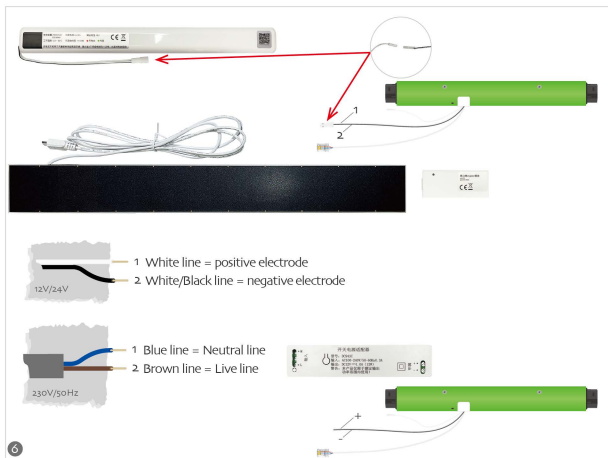
Step 3: Fix the mounting brackets with screws.

Step 4: Put the honeycomb blinds hang into the brackets as pic.

Step 5: Push the top rail and you hear sound of click then the brackets inserted into the top rail.



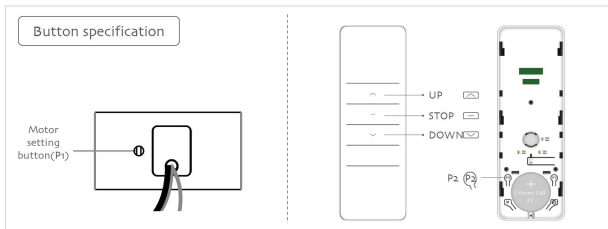
Step 6: Power connection. It has two ways of connection: 1) adopt the battery motor charger, then connect the battery with the motor wire directly then ok. Battery charged by power or solar panel. Both are suitable. 2) Standard power supply way, it need the standard power connect with transformer of motor. L/N wire need to connect the connector L/N of transformer, Output +/- connect the power +/- wire then ok. (Notice: Adopt the standard power supply way, pls make sure wire connection in the condition of power off. Make sure the wire connection finished then operate as power on.).



Step 7: The motor will shake for one time after motor wire connection and power on. Then finish power supply for the blinds.

Step 8: With remotes to operate the honeycomb blinds open, stop and close totally and check whether all are ok or not. If no problem then finish the assemble work.

Control Method



Remotes Set(Factory mode)

(1)Setting up P₂→P₂→Up

If you need to reverse the rotation of the motor controlled by the emitter, please run the reverse of direction setting.



(2)Switch direction Up→Up→Down



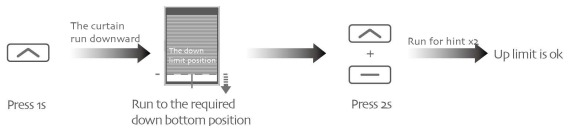
Note: After the success of the reversing, retain all motor original settings.

(3)Limit position setting

a, Set the up limit position Up→Up+Stop



b, Set the up limit position Down→Stop+Down

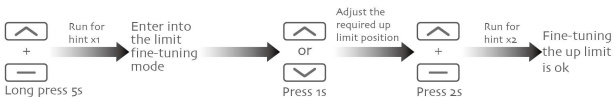


Note: Set the limit, short press the up/down button, the motor jog-move, long press more than 2s, the motor running continuously; The limit setting mode is not completed, if the limit has been set before the limit has been used to set before the limit; set up limit and down the limit into the user mode.

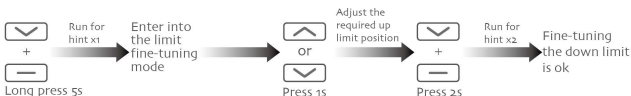
Remotes Set(User mode)

(1) Fine-tuning the up/down limit position

a, Fine-tuning the up limit position Up+Stop→Up/Down→Up+Stop



b, Fine-tuning the down limit position Down+Stop→Up/Down→Down+Stop



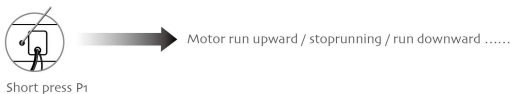
Note: After entering the trip fine-tuning mode, the original preferred stop position will not be deleted; if there is no button operation in 2 minutes, 2 minutes time limit, motor chance to rotate the hint, and automatically exit the limit fine-tuning mode; After fine-tuning the up/down limits can not be in the same position.

(2) Add emitter P2 a → P2 a → P2 b



Motor P1 button operation

(1) Short press function



Note: This operation should be carried out under the conditions of motor has the limit.

(2) Setting up / add emitter / delete emitter



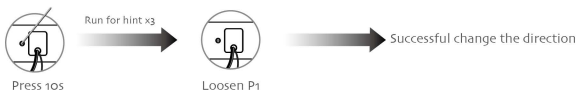
Note: in the factory mode, enter setting up state; In the user mode, enter add or delete state.

(3) Shielding wireless function

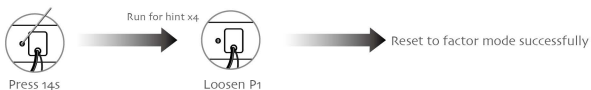


Note: the motor enters the wireless shield mode, saves the previous system function setting and the emitter code, and closes the wireless reception function(short press P1 to restore wireless reception).

(4) Switch direction



(5) Reset to factory mode



Note:After the Reset to factor mode,will delete all previous system function setting and the emitter code.

Zigbee control Method

If adopt the zigbee control method, then need choose the special Zigbee motor with the zigbee controller mode together. Relative operate steps refer to the Zigbee mode instruction.

Integrity / Quality / Professional / Service



Tianjin Hunters Technology Co., Ltd

📍 No.6 building, Changqingteng Art & Industrial Park, No.10 Caizhi Road,
Jingwu town, Xiqing District, Tianjin, China. Post code: 300392

☎ +86 22 23982209

📠 +86 15922294041

✉ laura001@aliyun.com