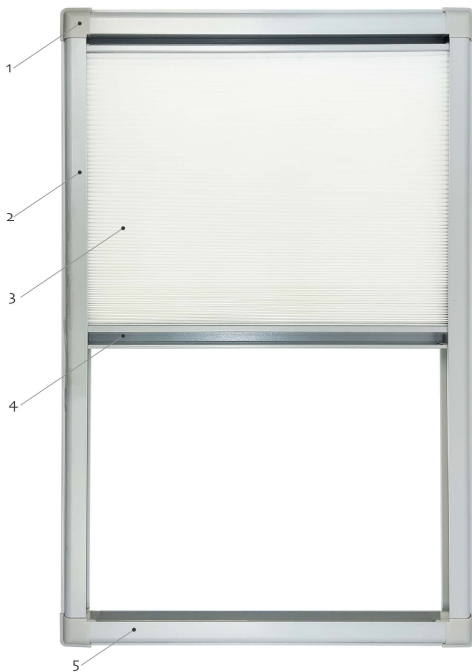




**Installation & Usage Instruction**  
**Manual Inserted Frame Honeycomb Blinds**

DESIGN BY HUNTERS

## Product Structure



1. Decor Cover

2. Side Rail

3. Fabric

4. Handle

5. Bottom Rail

## Packing list



Honeycomb Blinds x1



Instruction x1



Screws x4

## Recommended installation tools



Mark Pen



Tap measure



Screw driver



Level instrument



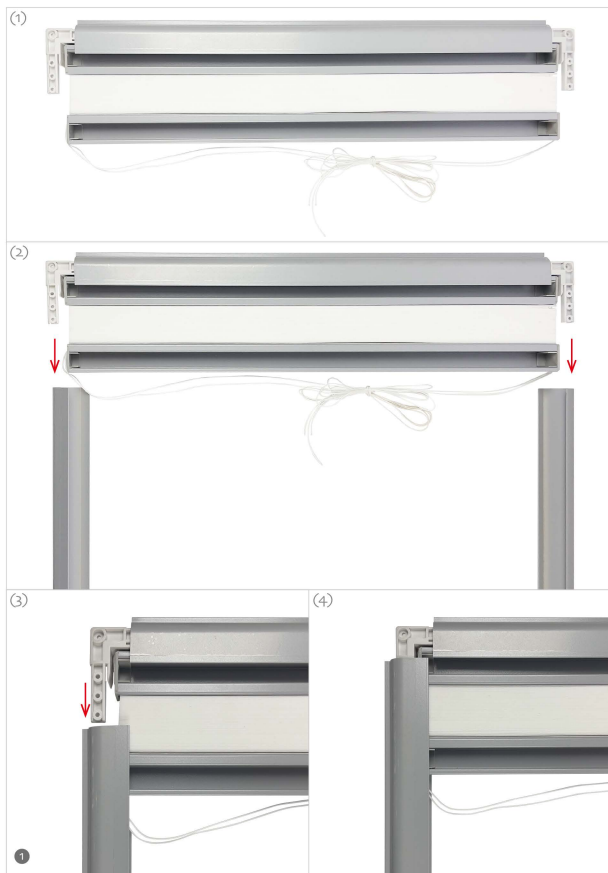
Rubber hammer



Electric hand drill

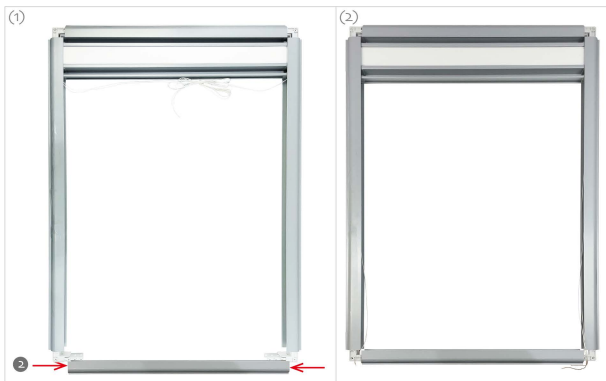
## Assemble Steps

**Step 1:** Join the top rail with the side rail by L connector.





**Step 2:** Join the top rail with the side rail by L connector.



**Step 3:** Put the directing rope into the hole of connector of bottom rail and go through it then tighten and tie a knot. Cut the extra no use rope off then ok.



**Step 3:** Put the decor cover into the 4 angles and fix.



**Step 5:** Assemble finished.



## Installing Steps(Punch Installation)

**Step 1:** Put the finished assemble products into window frame and make sure the inside attach the window frame exactly.

**Step 2:** Fix the screws to the side around rails with the window frame.

**Note:** 30~40cm with one screw as the side around rails' size.



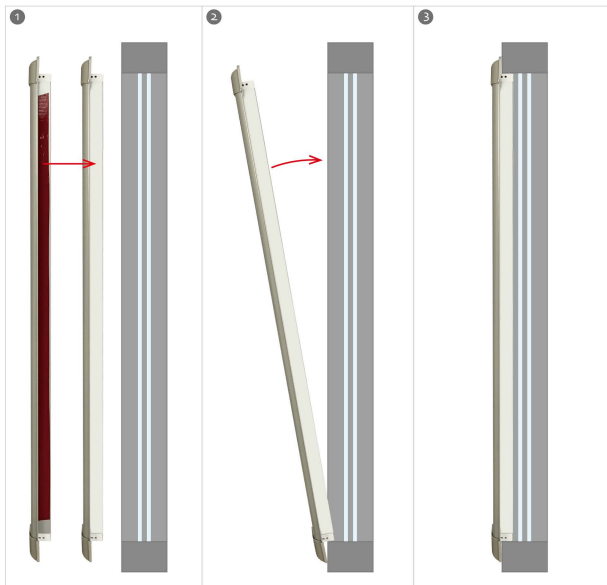


## Installing Steps(Punch-free Installation)

**Step 1:** Take the tape firm for side around frame of finished products ( in red color)off.

**Step 2:** Put the blinds into the window and press it tight and attach firmly.

**Step 3:** Installation finished.



**Integrity / Quality / Professional / Service**



**Tianjin Hunters Technology Co., Ltd**

📍 No.6 building, Changqingteng Art & Industrial Park, No.10 Caizhi Road,  
Jingwu town, Xiqing District, Tianjin, China. Post code: 300392

☎ +86 22 23982209

☎ +86 15922294041

✉ laura001@aliyun.com